

USER INSTRUCTIONS - HOTEL DRAWER LOCK



ABOUT THE LOCK

This lock requires a 4-6 digit code to open. Guests/Users can choose their own code and a master code can be programmed. The lock also features an emergency key.



How to open the safe for the first time

- Enter the code '000000' (factory default master code)
- Open the safe door

How to close the safe

- Close the safe door
- Enter your chosen code (must be 4-6 digits long)
- Press the [L] key

How to open the safe

- Enter your 4-6 digit code
- Open the safe door

How to change the code

- Enter your code and open the safe door
- Follow the instructions for 'How to close the safe'

Incorrect entry

If an incorrect code is entered the bolts will not retract, try your code again. After 4 incorrect entries, the screen will display 'ERROR' and then 'HOLD15'. The lock will be disabled for 15 minutes. You can't enter a code again until the 15 minutes is up. You can open the safe with the emergency key during the 15 minutes.

How to set/change the master code

The master code can open the safe if the user code is forgotten.

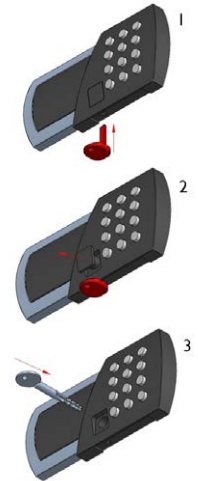
- Press key [0] twice followed by the [L] key
- The screen will display 'OLD'
- Enter your current master code ('000000' factory default)
- Press the [L] key, the screen will display 'NEW'
- Enter a new 6-digit master code followed by the [L] key
- The screen will display 'AGAIN'. Re-enter your new 6-digit master code
- Press the [L] key, the screen will display 'DONE'

To open the safe with the master code:

- Enter your 6-digit master code
- Open the safe door

How to open the safe with the emergency key

- Insert the red key in the bottom of the keypad to release the plastic cover on the front
- Remove the plastic cover and then the red key
- Insert the emergency key and turn it clockwise. The screen will display 'MANUAL'
- Turn the key anti-clockwise and then remove it
- Press the [L] key and the bolts will retract
- Open the safe door
- Replace the plastic cover



Current supply / battery change

To check the battery power press the [L] key. 'HI-BAT' will display for a high battery and 'LO-BAT' will display for a low battery.

If the battery is low the screen will automatically display 'BA-LO'. Replace the battery if you see this message. This lock takes AA batteries. Burton Safes recommends the Duracell brand.